

# Of the Moon, Under the Moon

for Trumpet, Live Electronics and Video

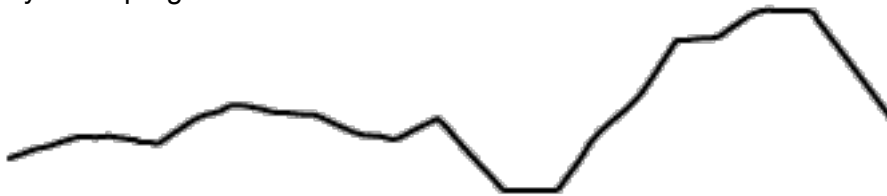
Nicole L. Carroll  
2016

*Of the Moon, Under the Moon* was inspired by divination folklore and hermetic occult philosophies. Pitch and amplitude content, and live processing and audio synthesis parameters are derived by mapping lunar data from NASA's Horizons Ephemeris System. The trumpet is accompanied by environmental soundscapes and videos representing each element: earth, air, fire, and water, which are mapped to corresponding moon phases, as detailed in W.B. Yeats's *A Vision*. Parameters change as the mapping system moves through each of the 28 days of the lunar cycle. This piece was written for Sam Wells, for premiere at SPLICE in 2016.

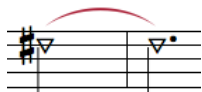
## Performance Notes

Contour lines of free section depict partials of accompanying soundscape. Each free section is approximately :45. Performer may choose any shape within the section, and may repeat. Order may be varied. Timing and pitches for each shape determined by performer.

Restrictions: B and Bflat should only be played in passing, and should not be landing notes. Dynamic progression is notated for each section.



Triangle note heads indicate breath through horn without tone.



Circled number **①** indicates cue to press midi foot pedal. Time markers (00:20) indicate elapsed time from previous cue, and when to enter into next cue.

# Of the Moon, Under the Moon

Nicole L. Carroll

1

00:20

3

Earth

♩ = 60

Straight mute

Trumpet in C

2

(computer intro)

*p*

additive cluster,  
will continue throughout

detuned tumpet

00:45

4

Mute Optional

C Tpt.

8

8

Dynamic progression: pp-mp



14

Earth soundscape

buffer playback: earth A



23



2 00:45

Of the Moon, Under the Moon

5 ♩ = 80

Straight mute heavy

C Tpt.

31 *mf*  
(detuning continued)

C Tpt.

36 *p*

00:45

6

♩ = 90

No Mute

gradually increase depth-like ripples

Water

C Tpt.

45 *p*  
Water soundscape

swell in additive cluster

C Tpt.

51 *p*  
trumpet processing: delay stack, chorus, comber

C Tpt.

56 *p*

Of the Moon, Under the Moon

C Tpt.

60

5:4

5:4

5:4

5:4

5:4

3

60

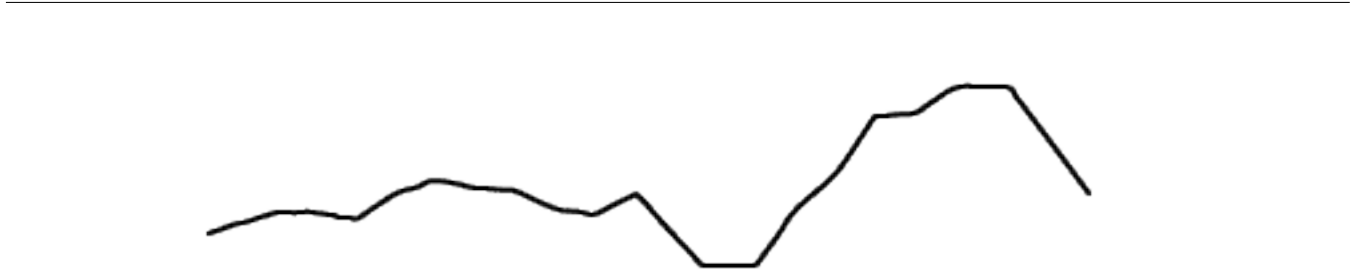
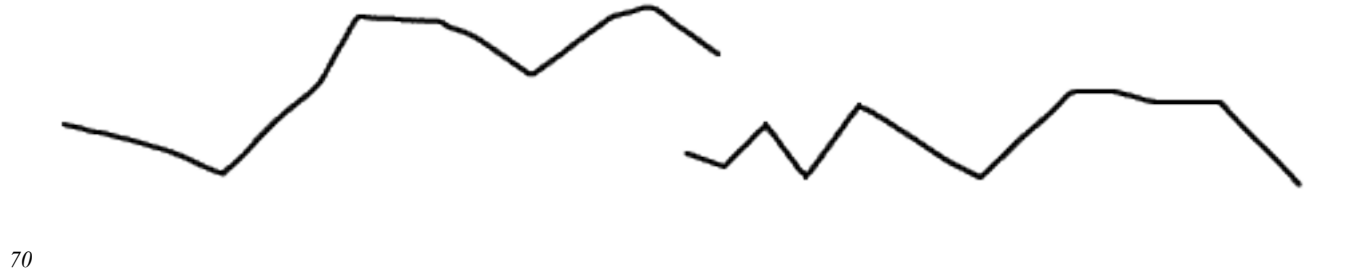
*f*

00:45

7 Dynamic progression: mf-fff

C Tpt.

63



00:45

8

C Tpt.

76

3

3

5

5

3

4:05

*f*

Of the Moon, Under the Moon

C Tpt.

79

79

C Tpt.

83

83

*mp*

*p*

gradually decrease depth over both sets—like ripples

C Tpt.

88

88

00:45

9

♩ = 80

Air

breath through horn - no full pitch  
Plunger mute gradually open and close

below indicates rhythm for air notes

C Tpt.

94

94

10

full tone  
No Mute

*mp*

trumpet processing: filter, reverb

buffer playback, various air sounds

C Tpt.

99

99

11

00:45

*f*

this phrase repeated in electronic part

Dynamic progression: fff-f

Mute Optional

104

Air soundscape

5:35

108

112

00:45

12

C Tpt.

Musical notation for C Tpt. starting at measure 116. The notation includes a melodic line with a long slur over several measures, containing several triplet markings. The dynamic marking *f* is present at the end of the line.

116

*f*

C Tpt.

121

13 breath through horn - no full pitch flutter tounge

Musical notation for C Tpt. starting at measure 121. The notation includes a melodic line with a triplet marking, a dynamic marking *mp*, and a section with breath marks and flutter tonguing. The dynamic marking *mp* is present below the staff.

121

below indicates rhythm for air notes

Rhythmic notation for air notes corresponding to the previous section. It shows a series of notes with stems and beams, indicating the rhythm for the air notes.

Of the Moon, Under the Moon

00:45

♩ = 120

Fire

Brassy

14

C Tpt.

122

126

*ff*

trumpet processing: comber

C Tpt.

131

131

*sfz*

C Tpt.

134

134

*sfz*

C Tpt.

137

137

*sfz*

C Tpt.

140

140

*sfz*

C Tpt. 143

143

*sfz*

C Tpt. 146

00:45 (15)

Dynamic progression: f-p

146

*sfz*

Fire soundscape

152

C Tpt. 156

00:45 (16)

156

*sfz*

C Tpt. 159

159

*sfz*



C Tpt. 162

162

C Tpt. 165

165

C Tpt. 168

168

00:45

17

C Tpt. 171

171

additive synth layers  
continue for 00:20

00:20

Free time- as long as possible, may stop before or after computer part

18

C Tpt. 176

Wispa mute

176

ppp

18 is shutdown cue-  
wait until all sound is out